

Islet Cell Transplantation in the Thames Valley

Stephen Gough

Professor of Diabetes

Rob Crookston

Advanced Nurse Practitioner

Newspaper headlines in 1922





UK & World Latest News

Gunman found guilty in Dewani c_

'I remember nothing' says Birmingham diabetic death crash driver

Nov 9 2007

By Ross McCa

A DIABETIC
nothing abo
car knocked

It is alleged
that his bloo
continued to
youngster.

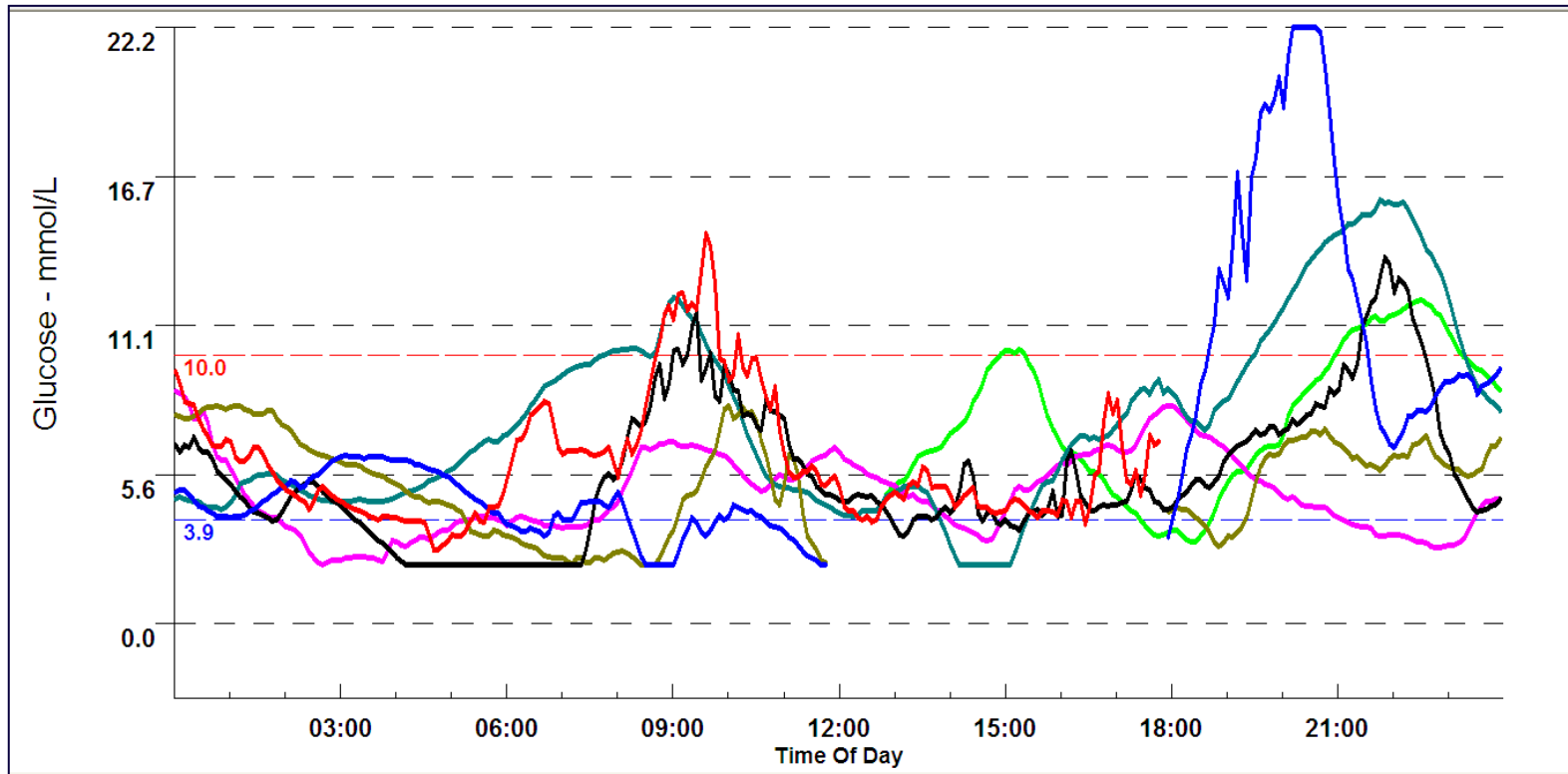
Clarke, aged
denied caus

One witness who saw the defendant behind the wheel shortly before the accident described him as "looking paranoid"

His vehicle mounted a pavement, struck the boy and his brother, then went through a garden wall, across a garden and into a house in Stirchley.

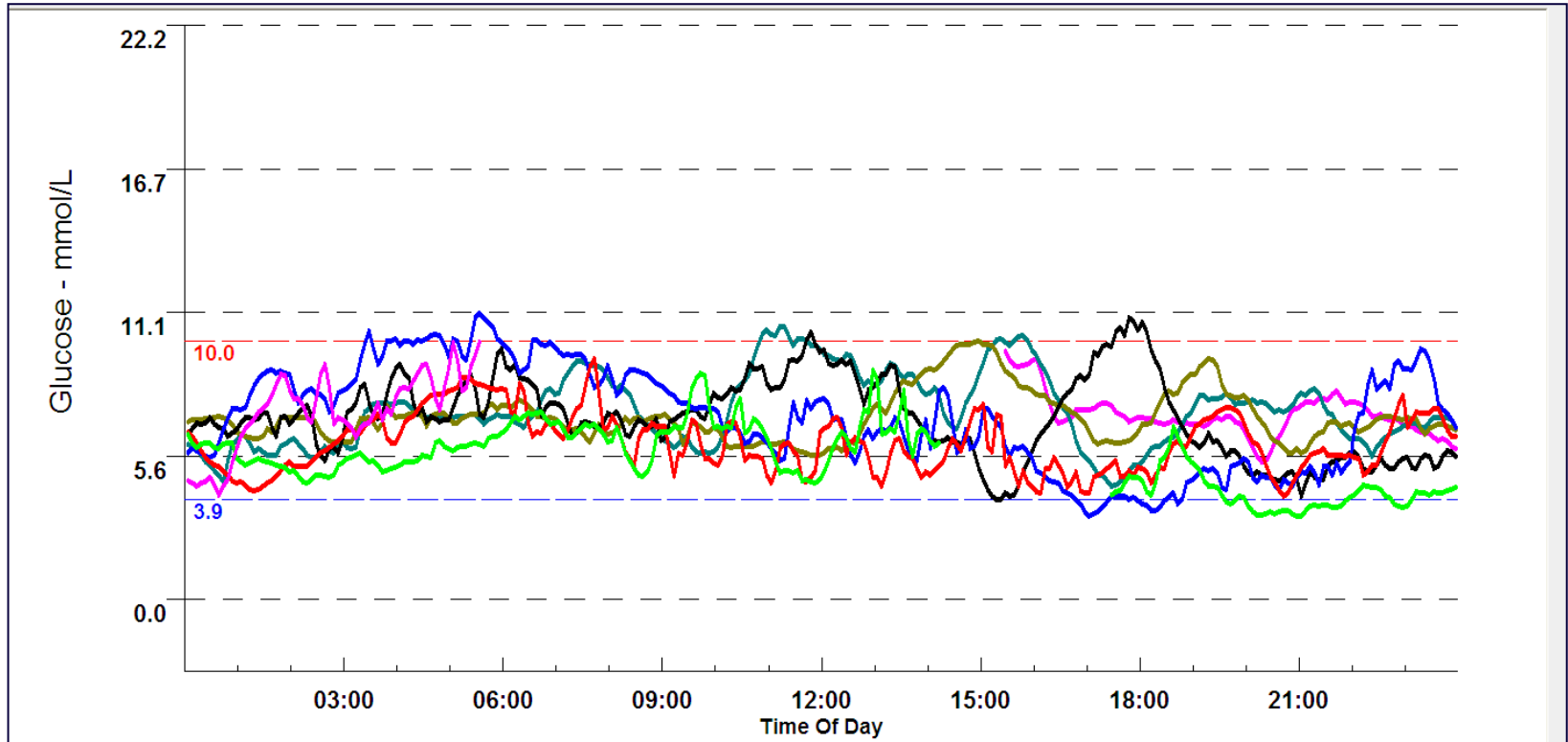
Leading up to the accident the defendant, who was at the wheel of a Renault, had been driving in an erratic manner and was seen to swerve across lanes

Pre-transplant glucose profile



HbA1c 7.0%

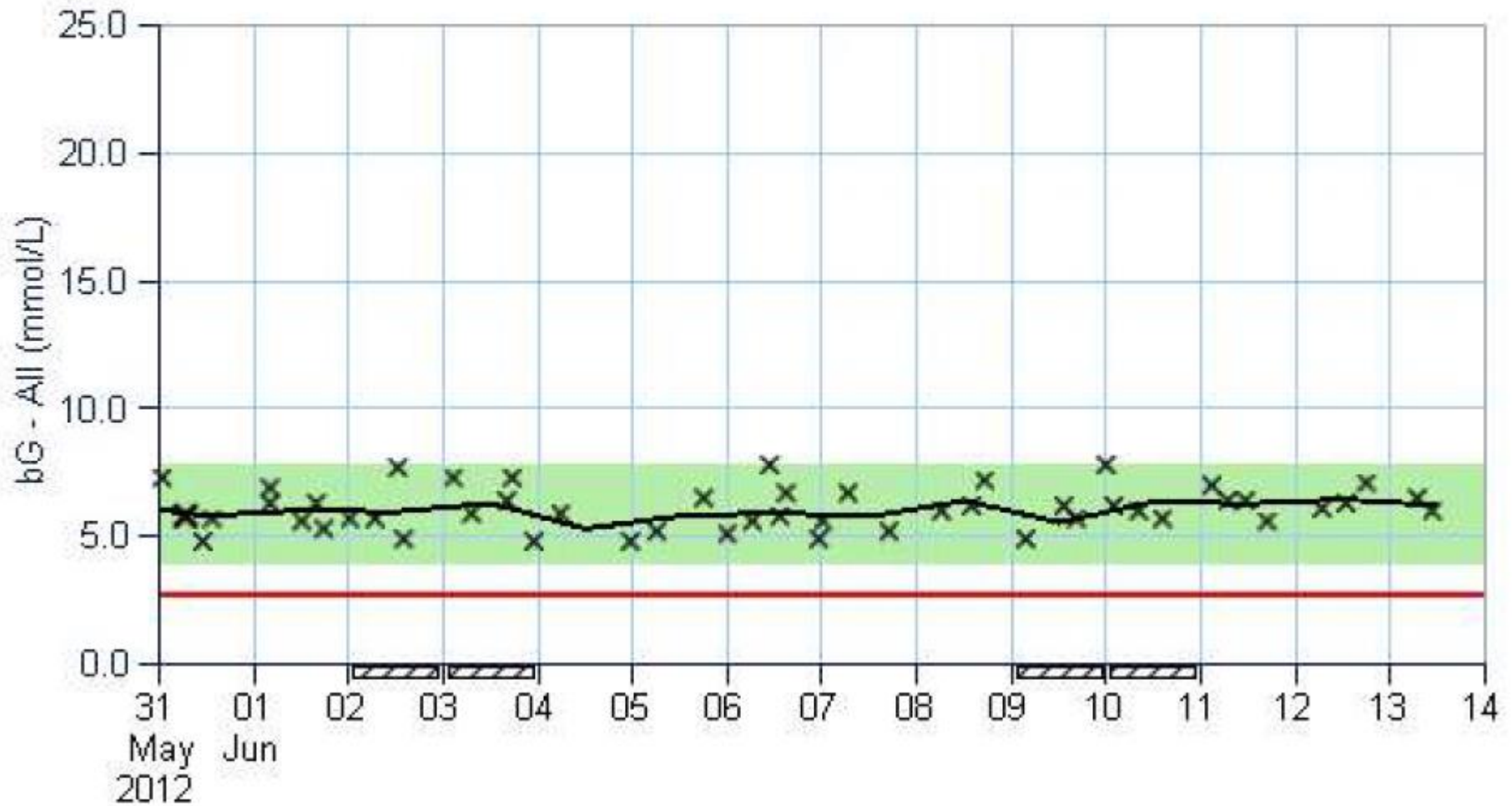
Post-transplant glucose profile



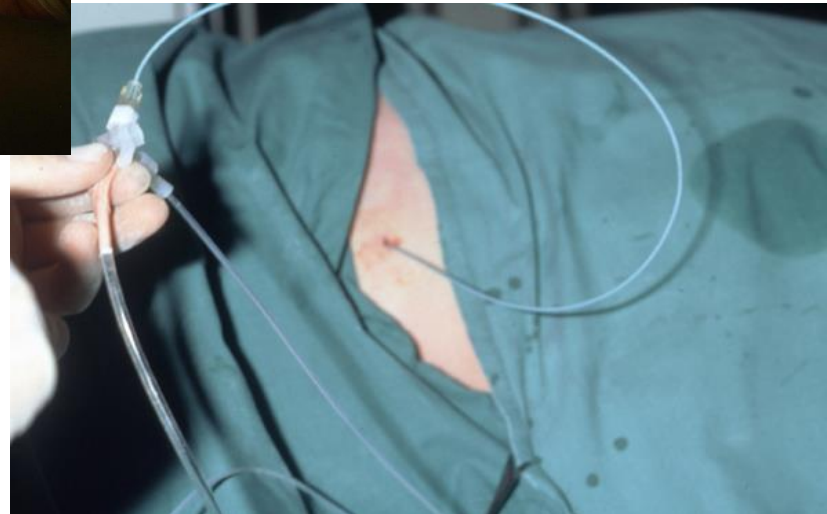
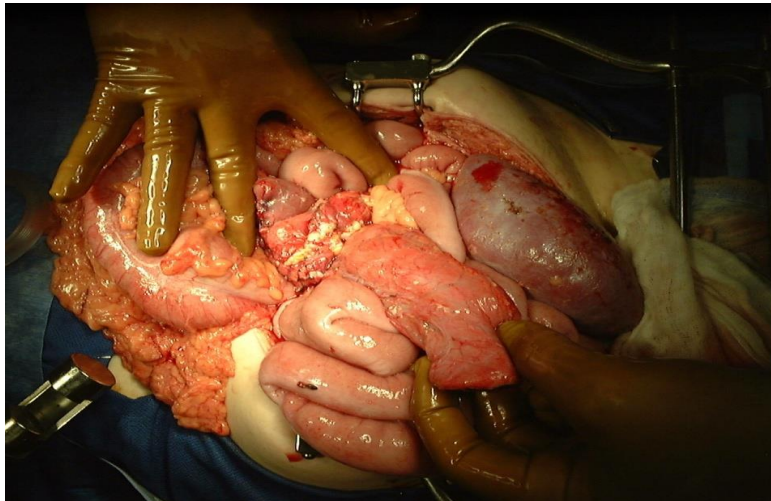
HbA1c 6.0%

Glucometer trends May – June 2012

Trend - bG - All (31/05/2012 - 13/06/2012)

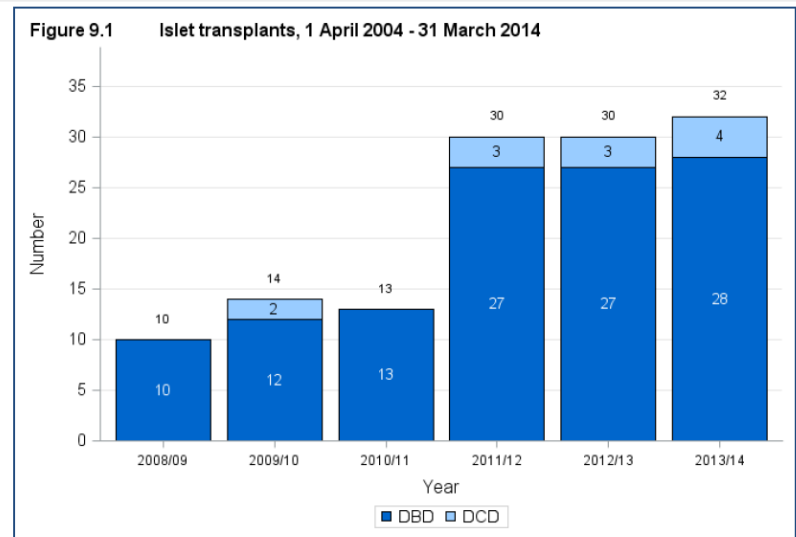


Islet and Pancreas Transplantation: Two different approaches



Islet cell transplantation in the UK

Islet Transplant centres



- Funding is currently available from NHS England for up to 100 transplants per year

Aims and objectives of the AHSN project

- Increase awareness of, and education in, islet cell transplantation
- Improve service access for people in the Thames Valley
- Improve outcomes for people with type 1 diabetes

Evidence Based Health Care Masters (University of Oxford)

To evaluate:

- Doctor knowledge and awareness of the service
- Patient experience

To improve:

- Awareness of the service
- The referral process and patient experience

Thames Valley Region and Hospitals.

NHS Trusts and Commissioners



- Buckinghamshire Healthcare NHS Trust
- Frimley Park NHS Foundation Trust
- Milton Keynes Hospital NHS Foundation Trust
- Oxford University Hospitals NHS Trust
- Royal Berkshire NHS Foundation trust
- Bedford Hospital NHS Trust.
- Great Western Hospital NHS Foundation Trust

Islet Cell Transplant Referrals

- 34 in total over the last 5 years
- 34 transplants in 21 patients
- **9 referrals from Thames Valley**
- **7 transplants in 4 patients**

Current issues with islet transplant

- All patients have to come to Oxford centre
- Requires intensive follow up
- Long distance travel for short appointments

Therefore, the aim is to provide:

**a hub and spoke service that can be delivered
with tailor-made solutions for patients**

Virtual Clinics

- Multiple formats
- To allow free flow of information
- To allows patient to be cared for locally with central support
- Can be used pre and post transplant
- Prevents unnecessary travel and reduces carbon footprint

“Digital Age” Hub and Spoke model

Advantages:

- Email referrals and dialogue to facilitate speedy decisions
- Appointments can be less intimidating and stressful
- Can be moulded to suit the needs and resources of the spoke centre
- Flexibility for working people

What have we done so far?

- Scoped current service, awareness and referral patterns
- Contacted all secondary care providers and held 1:1 visits in 5 centres in the Thames Valley
- Invited 40 secondary care diabetes healthcare professionals to central evening meeting
- Distributed clear Referral Criteria and Information Form distributed to Thames valley stakeholders
- Conducted national hypoglycaemia survey and designed patient and GP questionnaires

4 new referrals from Thames Valley received Feb-Apr 2015

Conclusions

- Islet cell transplantation is an established treatment for some people with type 1 diabetes
- Low level of awareness and knowledge
- Current “central” service is restrictive
- Programme of activities taking place to improve awareness and access to the islet service

Ultimate aim: to improve outcomes for people with type 1 diabetes