



Oxford AHSN Imaging Network

Fergus Gleeson



In May 2013, England became the first country in the world to create a nationwide system of Academic Health Science Networks (AHSNs). The AHSNs have a unique opportunity to align education, clinical research, informatics, innovation and healthcare delivery.

AHSN core purpose – health and wealth



- Licensed by NHS England for 5 years to deliver four objectives:
- **Focus on the needs of patients and local populations:** support and work in partnership with commissioners and public health bodies to identify and address unmet health and social care needs, whilst promoting health equality and best practice.
- **Speed up adoption of innovation into practice** to improve clinical outcomes and patient experience - support the identification and more rapid uptake and spread of research evidence and innovation at pace and scale to improve patient care and local population health.
- **Build a culture of partnership and collaboration:** promote inclusivity, partnership and collaboration to consider and address local, regional and national priorities.
- **Create wealth** through co-development, testing, evaluation and early adoption and spread of new products and services.

Our healthcare, academic and LEP partners

NHS in the Network



Universities in the Network



Local Enterprise Partnerships





AHSN Imaging Network

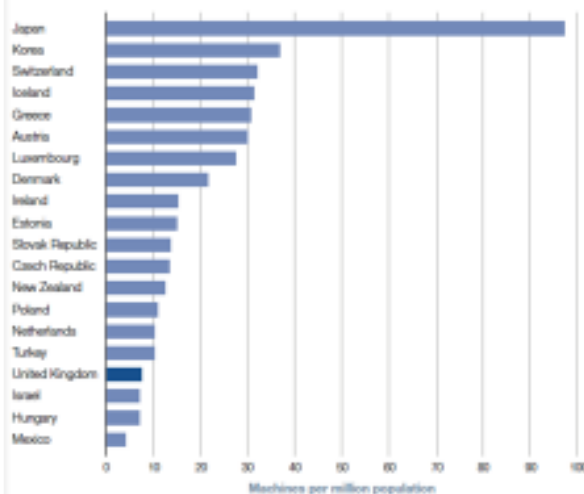
- Cover a population of 3.3 million
- Geographic range: Oxfordshire, Buckinghamshire, Berkshire and Bedfordshire
- 132 Consultant radiologists
- 20 MRI scanners
- 16 CT scanners



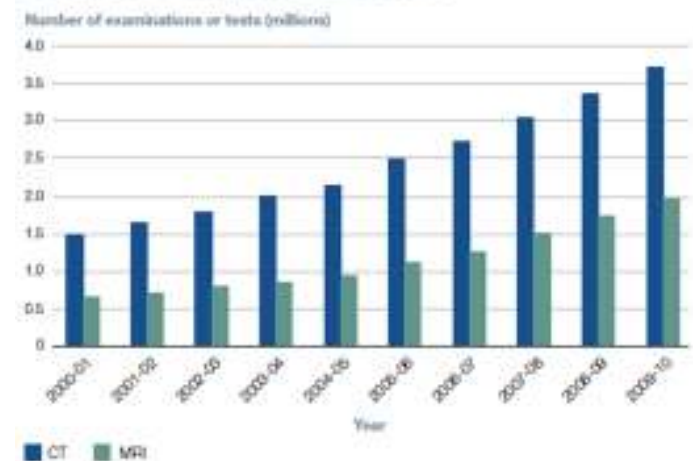
Imaging Background

- Not enough radiologists and radiographers
- Continuous increase in imaging
- Increasing Imaging complexity, regulation, and guidelines
- 24/7 and 365 demands
- Changes in medical – ILD, surgical - Oesoph Ca, and oncology practise - SABR
- Good relationships across the departments

CT machines per million population, 2008



Imaging examinations, 2000-01 to 2009-10





Background

*From the Office of the President
 Dr Giles Maskell MA FRCP FRCR*

02 October 2014

To Trust Chief Executives,



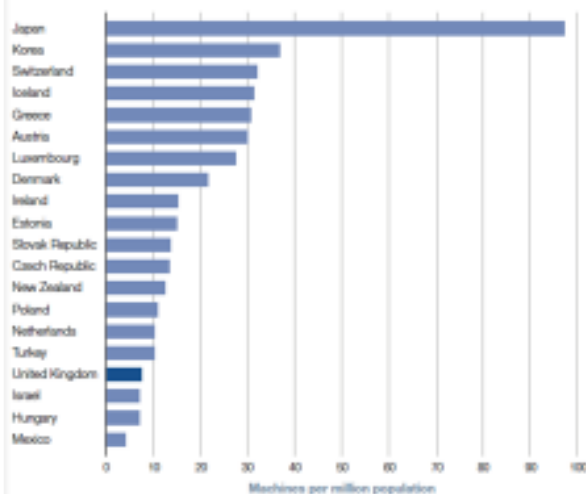
September 2014

Dear Chief Executive

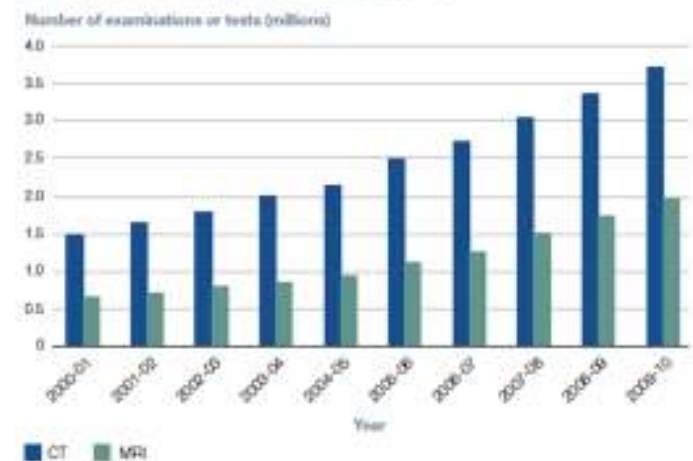
Radiology in the UK – the case for a new service model

Radiology networks

CT machines per million population, 2008



Imaging examinations, 2000-01 to 2009-10



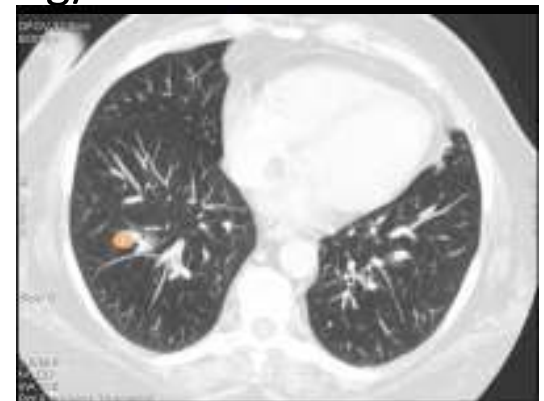


Opportunities for the Imaging Network

- Need to:
 - Develop and standardise common imaging protocols and pathways
 - Audit scan and report quality (PET-CT National contract)
 - Improve arrangements for image and reporting transfer
 - Improve on call for Interventional radiology and other services – paediatrics
 - Regularise specialist and second opinions
 - Promote recruitment to trials BRC, OCIC
 - Answer imaging questions that require large numbers of patients
 - Collaborate with commercial partners

AHSN Imaging Network Aims

- To collect baseline data
- To standardise (some) imaging protocols and pathways
 - To collect data on common pathways and imaging
- To introduce new pathways
 - PET-CT in lung cancer
- To provide a mechanism for audit
- To provide a network of additional and specialist reporting/on-call
- To help workflow
- To introduce and trial new technologies
- To provide a pathway for increased imaging research
 - Lung Cancer Follow-up



AHSN Imaging Network Aims

- To collect baseline data
- To standardise (some) imaging protocols and pathways
 - To collect data on common pathways and imaging
- To introduce new pathways
 - PET-CT in lung cancer
- To provide a mechanism for audit
- To provide a network of additional and specialist reporting/on-call
- To help workflow
- To introduce and trial new technologies
- To provide a pathway for increased imaging research
 - Lung Cancer Follow-up





AHSN Imaging Network Aims

- To collect baseline data
- To standardise (some) imaging protocols and pathways
 - To collect data on common pathways and imaging
- To introduce new pathways
 - PET-CT in lung cancer
- To provide a mechanism for audit
- To provide a network of additional and specialist reporting/on-call
- To help workflow
- To introduce and trial new technologies
- To provide a pathway for increased imaging research
 - Lung Cancer Follow-up



AHSN Imaging Network

- Project Initiation Documents
 - Audit of multi-provider imaging services
 - Creation of Specialist reporting network
 - Imaging trial development
 - Early PET-CT in lung cancer
- Network Consultants
- Support from
 - RCR
 - NHS England, National Clinical Imaging Director
- MSc student – Prostate Imaging
- PPIE
 - https://www.youtube.com/watch?v=zot_FdxPQCE&feature=youtube
- Discussions with commercial partners

