



Introducing the Oxford AHSN

Professor Gary Ford, CBE
Chief Executive Officer
Consultant Physician



AHSN core purpose – health and wealth

- Licensed by NHS England for 5 years to deliver four objectives:
- **Focus on the needs of patients and local populations:** support and work in partnership with commissioners and public health bodies to identify and address unmet health and social care needs, whilst promoting health equality and best practice.
- **Speed up adoption of innovation into practice** to improve clinical outcomes and patient experience - support the identification and more rapid uptake and spread of research evidence and innovation at pace and scale to improve patient care and local population health.
- **Build a culture of partnership and collaboration:** promote inclusivity, partnership and collaboration to consider and address local, regional and national priorities.
- **Create wealth** through co-development, testing, evaluation and early adoption and spread of new products and services.



DH Department of Health



Academic Health Science Networks

The Oxford AHSN

- **Our Vision.** Best health for our population and prosperity for our region
- **Our Mission.** We will support collaboration, research and innovation across the NHS, universities and business, building on our strengths to deliver exemplary care and create the strongest life science cluster

The Oxford AHSN

- **Strategy and objectives.** Our strategy is to be facilitative and work through **our partners** . We will build infrastructure and support the development of people to accelerate innovation and early adoption in our NHS partners that improves health and adds value, including funding clinical networks and developing teams for commercial development and innovation adoption to promote and accelerate change. Wherever it is possible we will ensure that the programmes, themes and resources support each other to maximise the chance of delivering against the four licensed objectives. We will avoid duplication of functions and activities and support our partners to collaborate and work together as a matter of course.
- **Our values.** We will be inclusive, transparent and fair

What and where

Oxford AHSN – 1 of 15 in England
 3.3M population
 Annual NHS spend circa £5bn
 NHS employees 65,000
 12 Clinical Commissioning Groups
 4 Local Enterprise Partnerships
 12 Councils
 Major international companies
 300 Life Sciences businesses



Complex landscape with many providers and agencies

Our Healthcare, Academic and LEP partners

NHS in the Network



- | | |
|---------------------------------------------------------------------------------------------|---------------------|
| 1 Berkshire Healthcare NHS Foundation Trust | Aylesbury Vale CCG |
| 2 Buckinghamshire Healthcare NHS Trust | Bedfordshire CCGs |
| 3 Central and North West London NHS Foundation Trust (community and mental health services) | East Berkshire CCGs |
| 4 Heatherwood and Wexham Park NHS Foundation Trust | West Berkshire CCGs |
| 5 Milton Keynes NHS Foundation Trust | Chiltern CCG |
| 6 Oxford Health NHS Foundation Trust | Milton Keynes CCG |
| 7 Oxford University Hospitals NHS Trust | Oxfordshire CCG |
| 8 Royal Berkshire NHS Foundation Trust | |
| 9 South Central Ambulance Service NHS Foundation Trust | |
| 10 Southern Health NHS Foundation Trust (Learning Disabilities) | |

(Locations of HCs except for 3 and 10)

Universities in the Network



- 1 Buckingham University
- 2 Buckinghamshire New University
- 3 Cranfield University
- 4 Oxford Brookes University
- 5 The Open University
- 6 University of Bedfordshire
- 7 University of Oxford
- 8 University of Reading
- 9 University of West London (Reading Hub)

Local Enterprise Partnerships



- Buckinghamshire LEP
- Oxfordshire LEP
- South East Midlands LEP
- Thames Valley Berkshire LEP



Oxfordshire Local Enterprise Partnership

SEM LEP

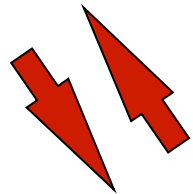
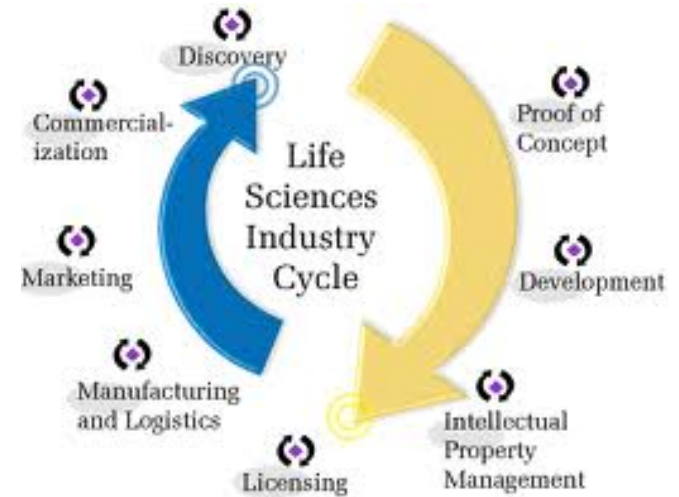
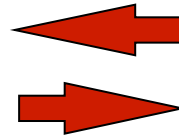
South East Midlands Local Enterprise Partnership

Buckinghamshire

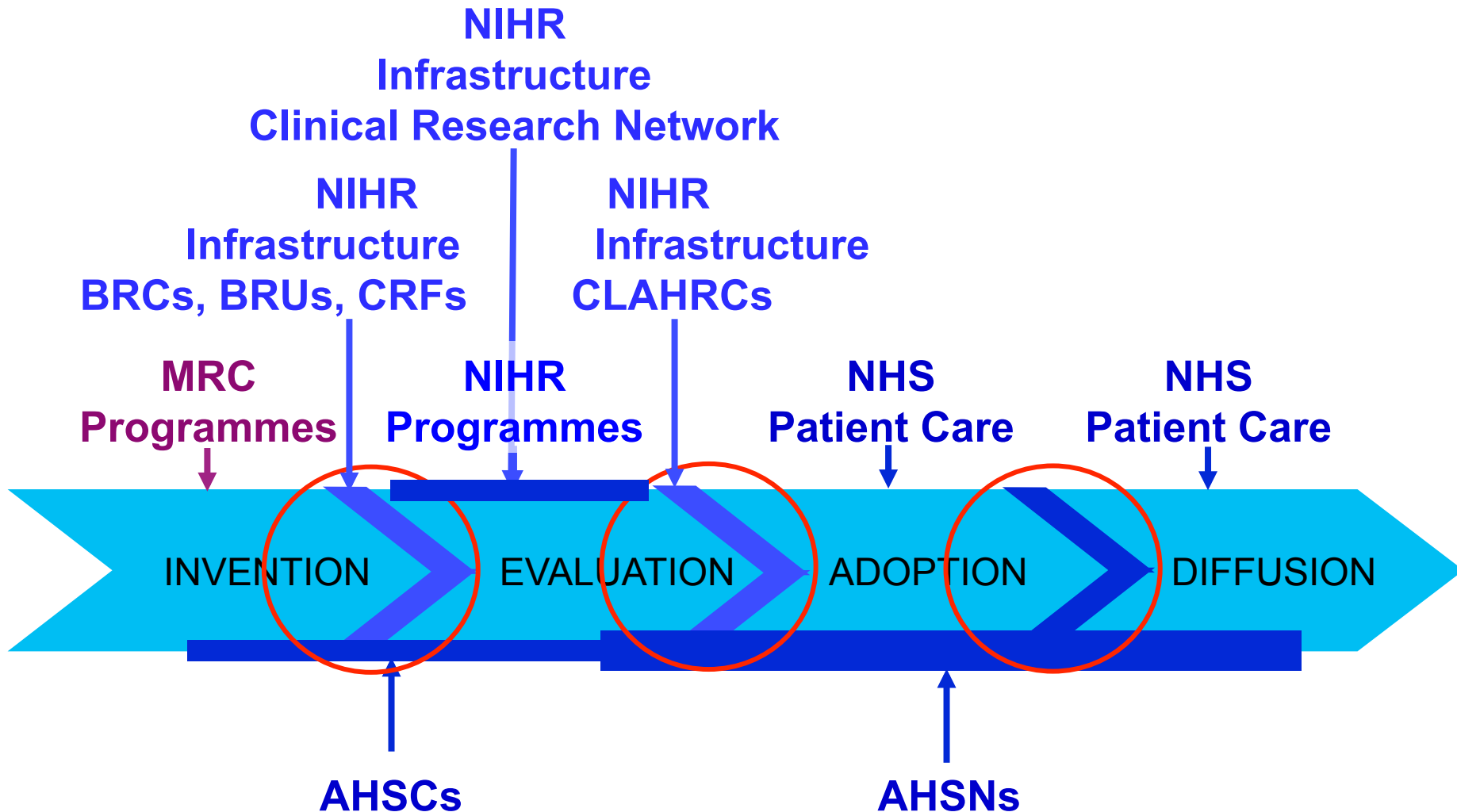
Thames Valley LOCAL ENTERPRISE PARTNERSHIP

THE ENTREPRENEURIAL HEART OF BRITAIN

The Oxford AHSN – facilitating partnerships



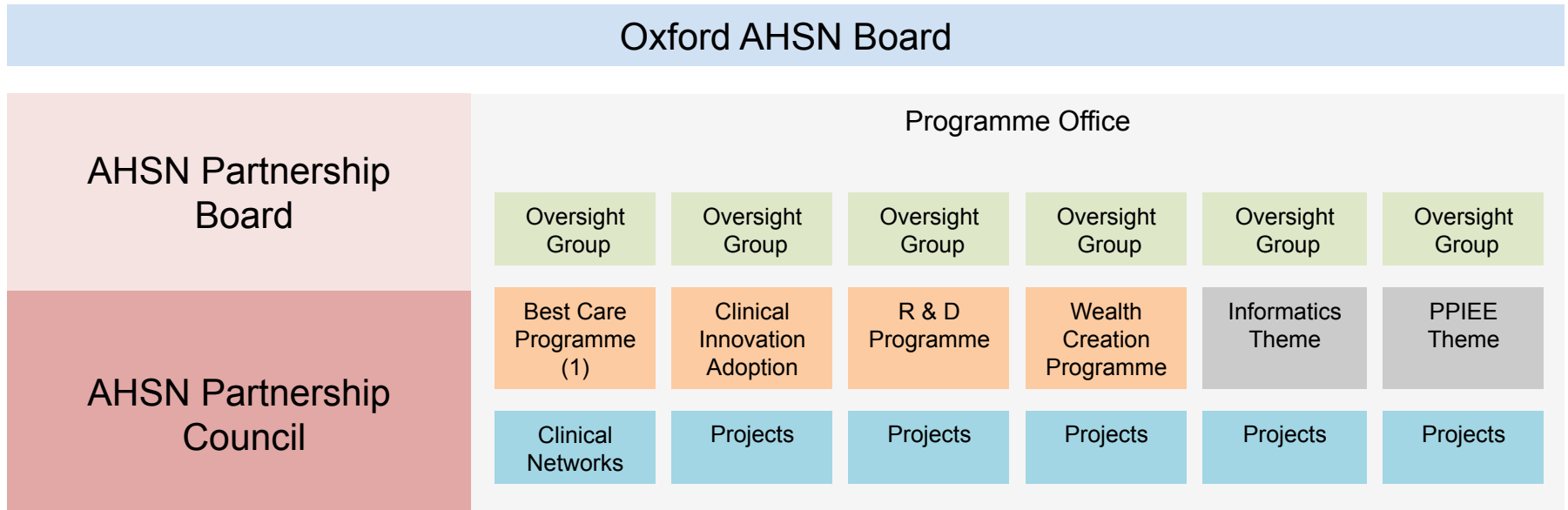
AHSNs, AHSCs and the Research and Innovation Landscape



The Oxford AHSC

- Designated from 1 April 2014 – one of six in England
- Partnership to build on world class basic medical research, translational research, education and patient care
- Partners are Oxford Brookes University, Oxford Health NHS Foundation Trust, Oxford University Hospitals NHS Trust, University of Oxford
- Nested within the Oxford Academic Health Science Network
- Six themes:
 - Big Data: delivering the digital medicine revolution
 - Building novel NHS, university and industry relationships
 - Modulating the immune response for patient benefit
 - Managing the epidemic of chronic disease
 - Emerging infections and antimicrobial resistance
 - Cognitive health: maintaining cognitive function in health and disease

Oxford AHSN Governance Structure



(1) Best Care Programme – Clinical Networks incorporates Integration & Sustainability, Population Healthcare and the Continuous Learning programme (including Patient Safety and Evidence Based Healthcare Fellowships)

Oxford AHSN programmes

- **Wealth creation programme** will support the region become the UK's strongest life science cluster as a favoured location for inward life science investment, life science business creation and growth, helping the NHS to accelerate the adoption of medical innovations of significant benefit to patients
- **Research and Development programme** will work with Thames Valley and South Midlands NIHR Clinical Research Network, Oxford NIHR Collaboration for Leadership in Applied Health Research and Care, other University research infrastructure and skills, and the life science industry to maximise the development and delivery of innovative clinical research that has major impact improving our people's health

The Oxford AHSN – cross cutting themes

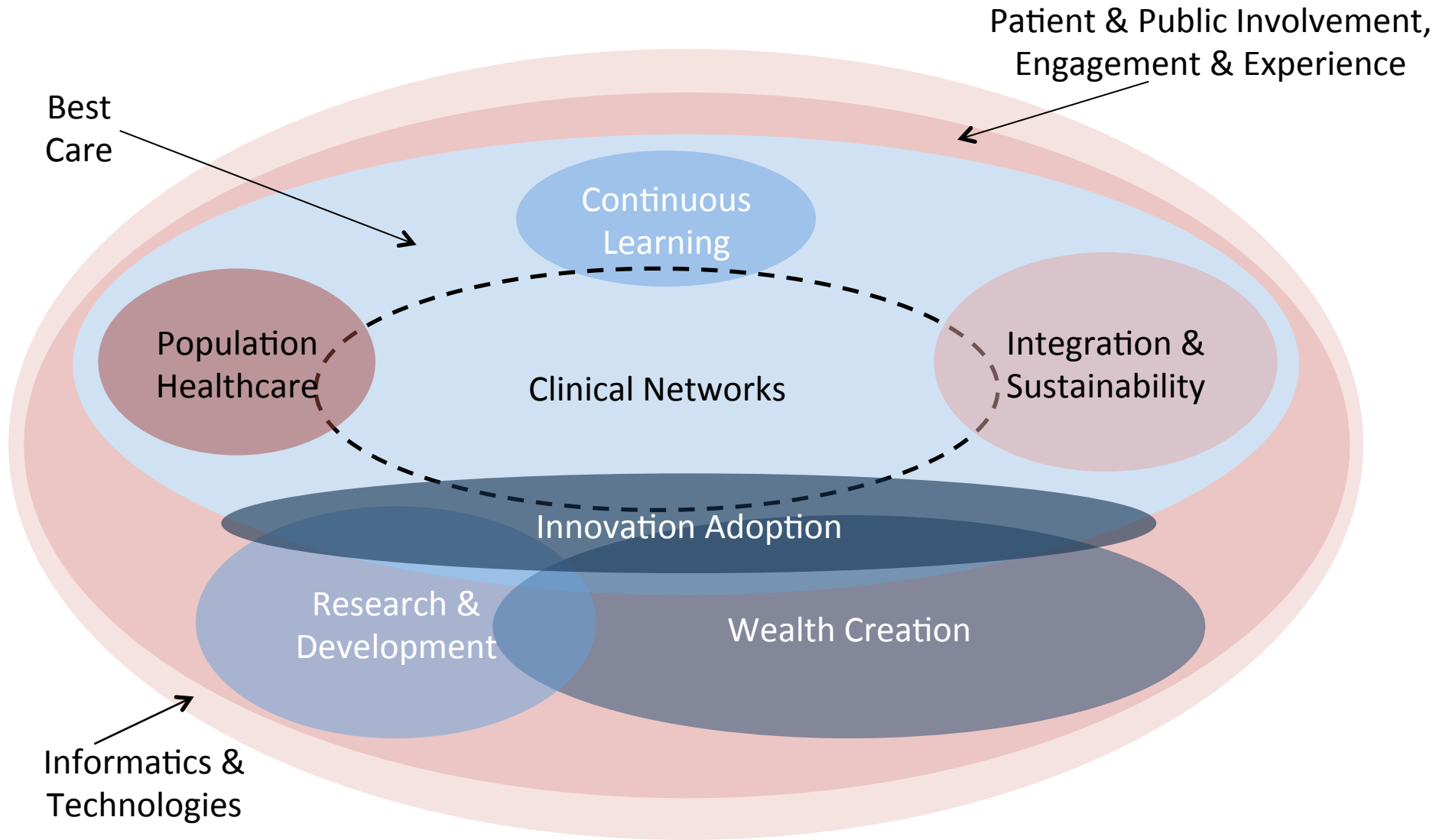
Informatics

- The Director of Information Strategy starts in April 2014 with a dual role across the Oxford AHSN and the recently designated Oxford AHSC, is intended to provide strategic leadership in linking core business goals through informatics and technology innovation, whilst providing critical contribution to the Oxford AHSN and OxAHSC partners' strategies

PPIEE

- The Oxford AHSN is working to embed partnership with patients and the public across its work programmes.
- Each of the clinical networks and the Patient Safety Academy are currently developing plans for PPIEE

How our Programmes and Themes fit together



Oxford AHSN Progress

- Mobilising our core team and recruiting a number of key individuals
- Funded 10 Clinical Networks that we are supporting
- Established the Clinical Innovation Adoption programme (10 innovations per annum)
- Established the Continuing Learning programme with partner Health Education Thames Valley – Patient Safety Academy and MScs for Evidence Based Medicine – open to 8 Clinicians (medics, nurses, AHPs, Pharmacists and Healthcare Scientists)
- Developed Wealth Creation Strategy in consultation with key stakeholder groups
- Established strong links with LEPs –part of the AHSN Partnership Board and we have agreed joint working to deliver the Wealth Creation programme
- Delivering PPIEE plans for each clinical network
- Produced a report , route map and event to support Medical App development and commercialisation
- Continued good stakeholder and public engagement via the sponsorship of and attendance at a range of conferences and meetings and a number of well attended locality events

Oxford AHSN Opportunities

- Develop common purpose amongst partners across the health innovation pathway
- Facilitate NHS service transformation and enhance self care - primary - secondary - tertiary care working
- Improve local prosperity